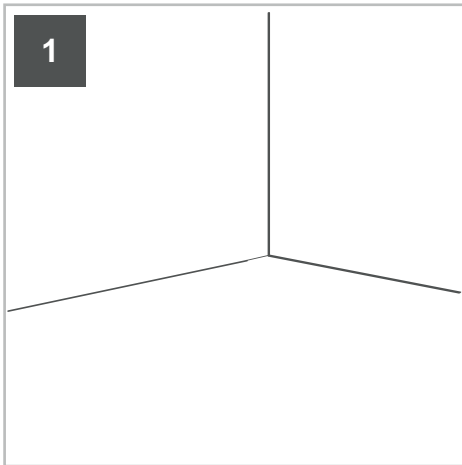


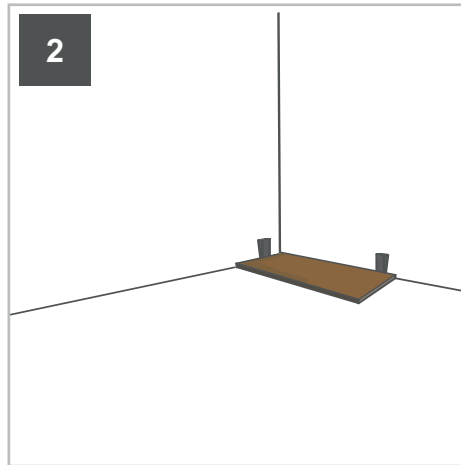


FLOORING BY  
**OAKLEGENDS**  
WATERPROOF FLOOR COVERING

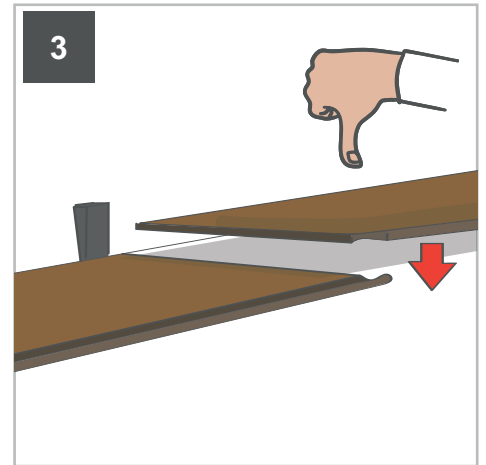
# INSTALLATION GUIDE



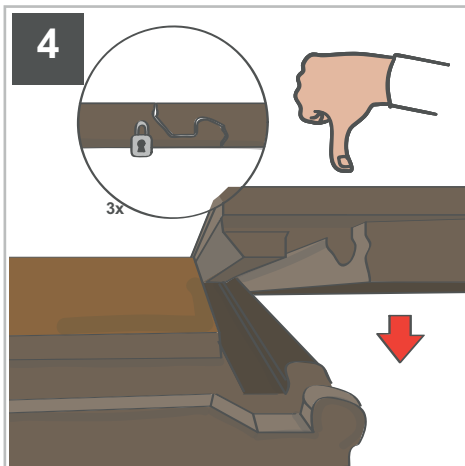
1. Prepare the area for installation. Ensure the surface is clean, dry, flat and even. You may need to prepare the floor using plywood sheets or a concrete screed. Plan the installation by measuring the room dimensions and the flooring planks/tiles to ensure efficient installation and minimize waste.



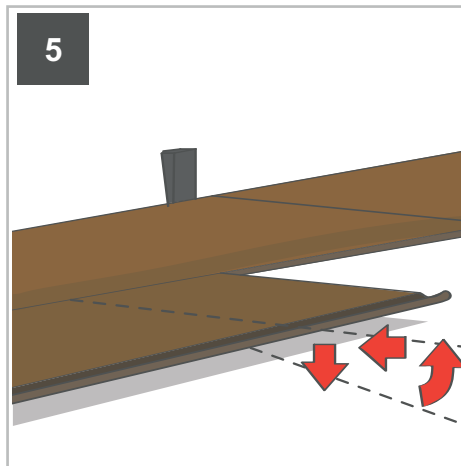
2. Flooring requires an expansion gap approximately 8mm (spacers may be used). The first plank/tile should be installed in the top left corner of the room working towards the window (if applicable).



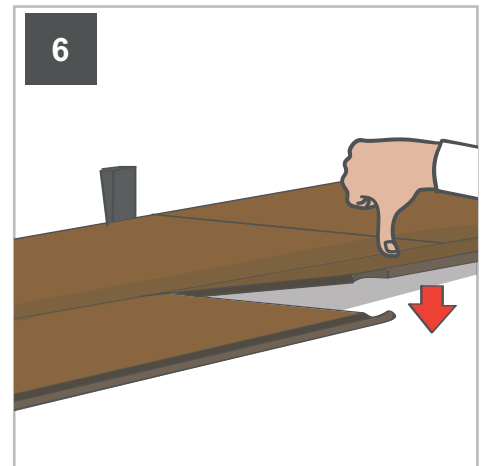
3. Install the flooring in rows by joining the left short edge of the next plank/tile to the right short edge of the previous plank/tile. The flooring is joined by the one-piece drop-lock system. Lay the panel in position and install by simply pushing down. Be careful not to apply excessive force that may cause damage. We recommend pushing down by hand, alternatively a rubber mallet may be used with caution.



4. Repeat this procedure for each subsequent plank in the first row and cut the last plank/tile to size if required. After installation of the first row, if planned correctly, use the off-cut from the last plank/tile from the first row to begin installation of the second row. If there is not an adequate off-cut to begin the next row, cut one full length plank/tile to ensure that each row is staggered.



5. Install the first plank/tile of the second row by inserting, at a raised angle, the tongue on the long edge into the groove of the first row. Push into position and lower the plank/tile to sit flat. Use a tapping block and rubber mallet to lightly tap the long edge of the new plank/tile to lock into position.



6. Line up the next plank/tile so that the one-piece drop-lock system on the short edge lines up with the one-piece drop-lock system on the short edge of the previously installed plank/tile. Raise the plank/tile at an angle and insert the tongue on the long edge into the groove of the first row (similar to the previous step). Push into position and lower the plank/tile until the left-hand side short edge is sitting on top of the right-hand side short edge of the previously installed plank/tile. Apply pressure, or gently use a rubber mallet, to push/tap down on the short edge joint and lock into position. Repeat this process to install the remaining planks/tiles.

**FIT &  
FORGET**

BUILDING & GARDEN PRODUCTS

0141 378 7567 | sales@ffbg.co.uk  
UNIT 8 | BLOCK 8 | SPIERSBRIDGE TERRACE  
THORNLIEBANK INDUSTRIAL ESTATE | G46 8JH



FLOORING BY  
**OAKLEGENDS**  
WATERPROOF FLOOR COVERING

# MAINTENANCE & PROTECTION GUIDE

## MAINTENANCE

Sweep and/or vacuum the floor to remove all loose dirt and grit  
Mop the floor using a properly diluted non-abrasive cleaner in cool water  
Rinse the floor thoroughly with clean water, remove any excess and allow it to dry

## PROTECTION

- DO NOT expose your Oak Legends flooring to temperatures exceeding 60°
- DO NOT use Oil or petroleum-based products as these can result in surface staining.
- Furniture with castors should have wide, rubber castors to avoid damaging the floor.
- DO NOT use ball type castors as they can damage the floor.
- Protective & non-staining mats are required under office chairs, heavy furniture and appliances.
- Apply felt pads to the underside of furniture legs/feet to prevent scratching the floor.
- Use door mats at entrances to prevent dirt and grit from being tracked on to the floor.

## UNDER FLOOR HEATING

OAK LEGENDS flooring is not compatible with ALL types of under flooring heating.  
Please consult prior to installation as failure to do so may invalidate your warranty.

## DO NOT USE STEAM MOPS OR ABRASIVE CLEANERS



**FIT &  
FORGET**

BUILDING & GARDEN PRODUCTS

0141 378 7567 | [sales@ffbg.co.uk](mailto:sales@ffbg.co.uk)  
UNIT 8 | BLOCK 8 | SPIERSBRIDGE TERRACE  
THORNLIEBANK INDUSTRIAL ESTATE | G46 8JH